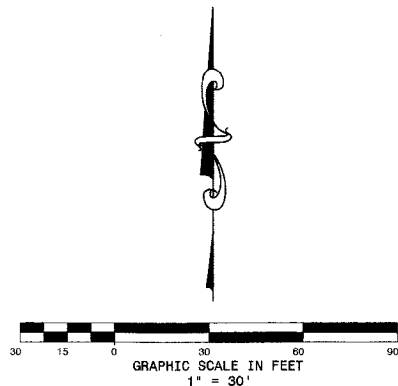


# CENTER ST PROPERTY PLAT

BEING A PORTION OF THE  
 NORTHWEST QUARTER OF SECTION 2, TOWNSHIP 41 SOUTH, RANGE 42 EAST,  
 TOWN OF JUPITER, PALM BEACH COUNTY, FLORIDA.  
 DECEMBER 2011

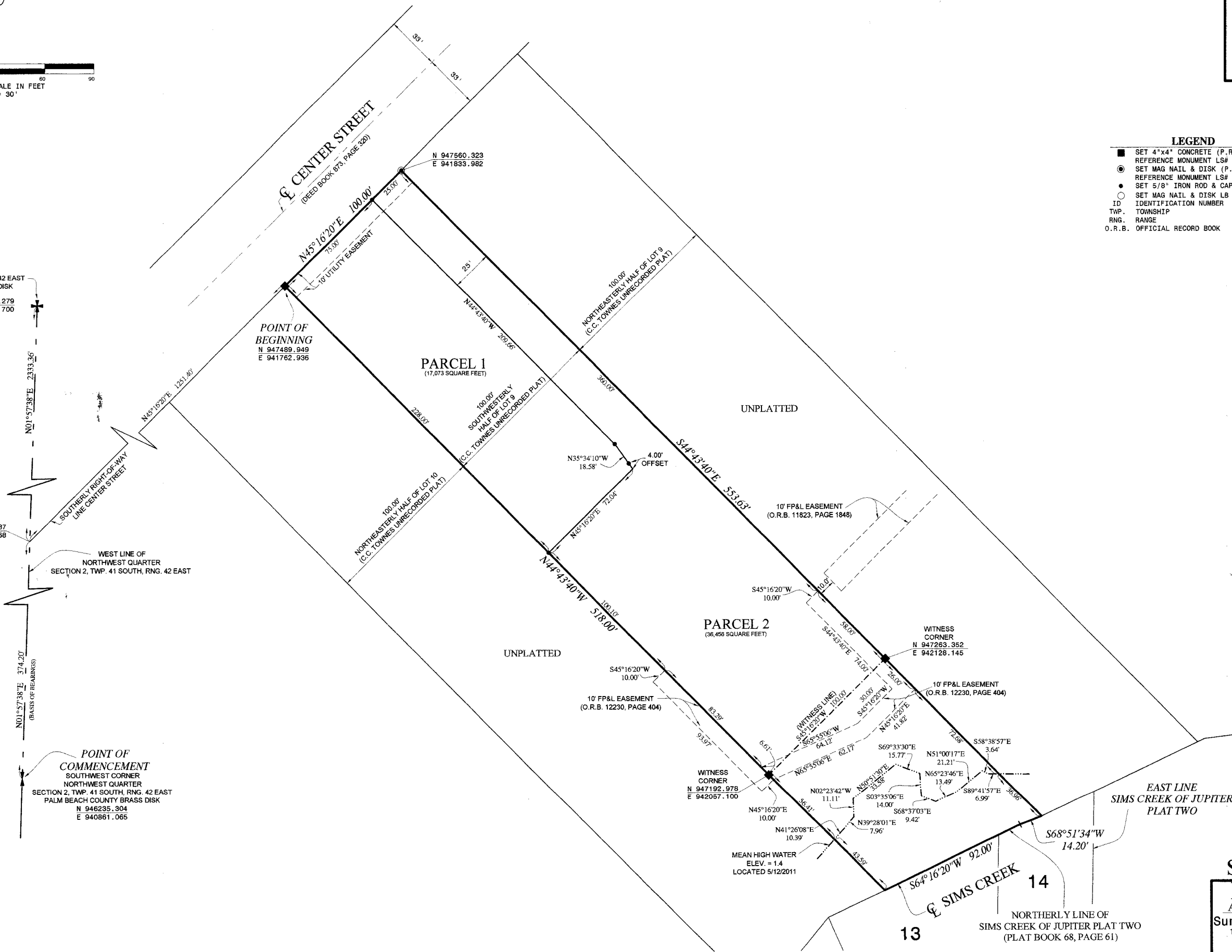


- LEGEND**
- SET 4"x4" CONCRETE (P.R.M.) PERMANENT REFERENCE MONUMENT LS# 2439
  - SET MAG NAIL & DISK (P.R.M.) PERMANENT REFERENCE MONUMENT LS# 2439
  - SET 5/8" IRON ROD & CAP LB# 2799
  - SET MAG NAIL & DISK LB 2799 (WITNESS CORNER)
  - ID IDENTIFICATION NUMBER
  - TWP. TOWNSHIP
  - RNG. RANGE
  - O.R.B. OFFICIAL RECORD BOOK

NORTHWEST CORNER  
 NORTHWEST QUARTER  
 SECTION 2, TWP. 41 SOUTH, RNG. 42 EAST  
 PALM BEACH COUNTY BRASS DISK  
 N 948941.279  
 E 940953.700

N 946609.287  
 E 940873.868

POINT OF COMMENCEMENT  
 SOUTHWEST CORNER  
 NORTHWEST QUARTER  
 SECTION 2, TWP. 41 SOUTH, RNG. 42 EAST  
 PALM BEACH COUNTY BRASS DISK  
 N 946235.304  
 E 940861.065



**SHEET 2 OF 2**  
**DAILEY AND ASSOCIATES, INC.**  
 Surveying and Mapping  
 112 N. U.S. Highway No. 1  
 Tequesta, FL. 33469  
 Phone: (561) 746-8424  
 BUSINESS LICENSE: LB# 2799